

# FAYETTE AREA COORDINATED TRANSPORTATION

## FARES

Fares are based on one-way trips and range from \$3.00—\$15.00. Please contact the FACT Transit Center for the exact fare. All riders must bring **EXACT** fare when you ride. Sorry, our drivers cannot give change.

**Phone: 724-628-RIDE**  
**Toll Free: 1-800-321-RIDE**  
**Fax: 724-628-7468**  
**Email: [info@factbus.com](mailto:info@factbus.com)**  
**Website:**  
**[www.FACTbus.com](http://www.FACTbus.com)**  
**TTY: 1-800-654-5984**

# FACT

## Transportation for People with Disabilities

"Striving Harder  
to Get You Farther"



**Tel. 724-628-RIDE  
(7433)**

Applications are available at the FACT Transit Center and can be obtained by calling our customer service at 724-628-RIDE

or by visiting our web site at

[www.FACTbus.com](http://www.FACTbus.com).

## Funding

This program is made available through Pennsylvania Department of Transportation



## Program Administered By

FACT

825 Airport Road

Lemont Furnace, PA 15456

or

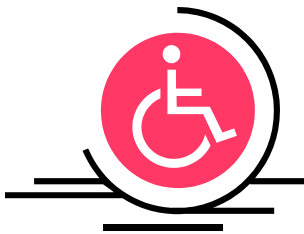
111 Transit Drive

Uniontown, PA 15401

## Who We Are

To better serve people with disabilities living in rural areas, Fayette County's transportation, FACT, is providing discounted **shared ride services for eligible residents in all of Fayette County.**

Everyone in Fayette County can use FACT, but only those who are eligible receive a discount.



## Who is Eligible

- If you are between 18-64 years of age
- If you have any disability defined by the Americans with Disabilities Act (ADA)
- If you have proof of your disability from a physician or agency
- If you completed, in its entirety, the Registration Form for the disabled....

**You are QUALIFIED!!**

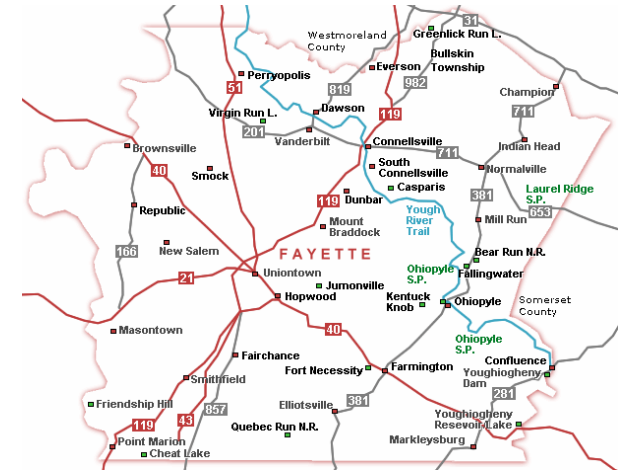
## INFORMATION

- This is a "by reservation only," curb-to-curb service.
- Hours of service are Monday through Saturday from 7:00AM to 5:00PM and Sunday from 7:00AM to 1:00PM
- You must register 24 hours in advance. For a Monday trip, register on the Friday before.
- To avoid charge, cancellations *must* be called into the FACT office at least two (2) hours in advance of the scheduled appointment time.
- Reservations must be made at least one (1) business day in advance of the scheduled trip and before the (2) two o'clock hour.
- This is a "shared-ride" service, meaning you will be sharing the van with others traveling in the same area at the same time.
- All FACT vehicles are wheelchair-accessible.
- The call taker will give you a pick-up time and instruct you to be ready a half an hour before and a half an hour after your scheduled appointment time.



## Where We Go

- Anywhere within Fayette County
- Designated areas outside of Fayette County



## COST

- Qualified participants receive an 85% discount on all rides.
- Rates vary depending on what distance you are traveling.
- All participants must bring exact fare when you ride.